

Wire to Board, Header

SWTB-C3000RD-XX

Description

The SWTB-C3000RD-XX is a DIP style connector with a 3.00 mm pitch and is available up to 24 poles.

Features



Mechanical Properties

	Description
Connector Type	DIP, dual row
Insulator body material	PA46, UL94V-0
Contact material	Brass, Tin plated over Nickel
Operating Temperature Range:	-40°C~+105°C
Pitch	3.0 mm
Poles	2-24 Poles
Orientation	Horizontal
Dimensions	See table

Electrical Properties

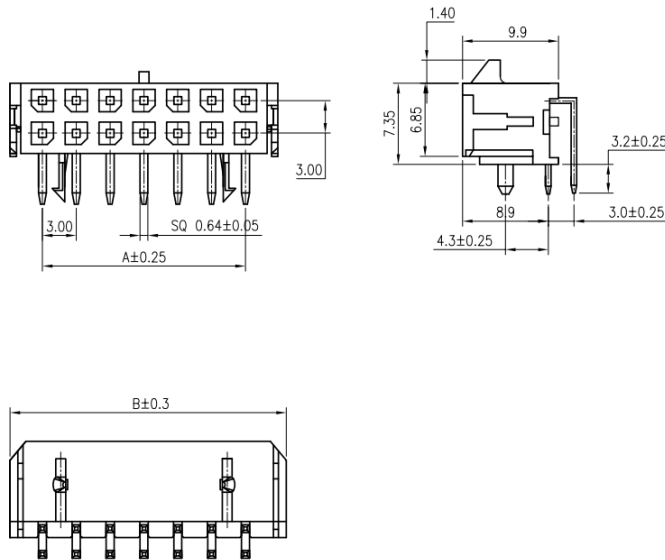
	Description
Current Rating:	5A AC/DC
Voltage Rating:	250V AC/DC
Contact Resistance:	10mΩ max.
Insulation Resistance:	1000MΩ min.
Dielectric Withstanding:	1500V AC / 1 min

Wire to Board, Header

SWTB-C3000RD-XX

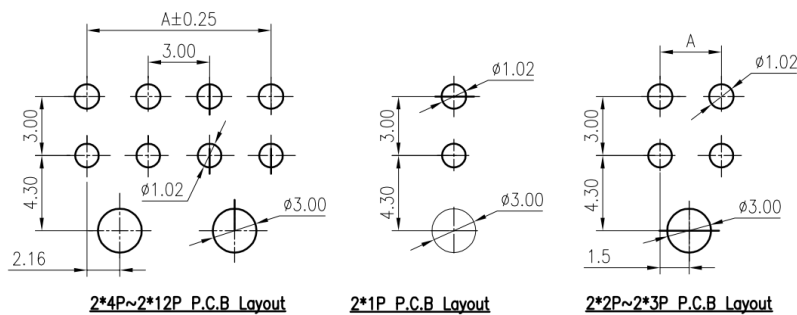
Dimensions

*unit: mm,



PCB Footprint

*unit: mm , N = number of poles



Number of Poles: Dimensions

Number of Poles:	Dimensions	
	A	B
2*1P		6,65
2*2P	3	9,65
2*3P	6	12,65
2*4P	9	15,65
2*5P	12	18,65
2*6P	15	21,65
2*7P	18	24,65
2*8P	21	27,65
2*9P	24	30,65
2*10P	27	33,65
2*11P	30	36,65
2*12P	33	39,65

Wire to Board, Header

SWTB-C3000RD-XX



Part number

SWTB-C3000RD-XX

SWTB-C3000RD	Style of connector
XX	Poles
	2,4,6,8,10,12,14,16,18,20,22,24

Ordering information

Ordering can be done via www.summit-electronics.com or via info@summit-electronics.com. Please contact us for more information. Customisation of the product is available on request.

Technical support

For all product questions please contact us via info@summit-electronics.com

Document revision

Rev	Date	changes
V01.00	27-06-2023	First issue of document, EK